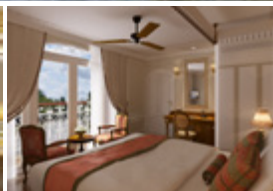


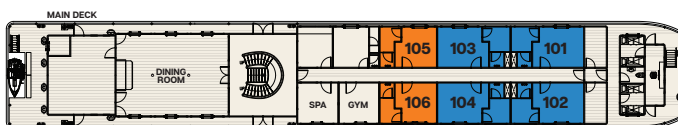
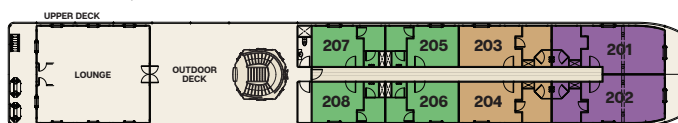
Mekong Princess



The *Mekong Princess* offers 14 luxurious suites combining the elegance of French Colonial style with the peacefulness and comfort of a Southeast Asian spa. All suites have sliding glass doors that open to a French balcony (railing); Angkor Suites also feature a private veranda with seating area. Suites have either twin beds that can be joined as a queen bed, or a king bed; a spacious seating area; en suite facilities with shower (plus separate soaking tub in the Tonle and Angkor Suites), hair dryer, spa robes, and slippers; individual climate control; daily butler service and housekeeping with nightly turndown; in-room safe; and televisions with satellite service. Breakfast and lunch may be served on deck, and single-seating dinners offer sumptuous French Indochine and gourmet Spa Cuisine featuring locally sourced fresh produce. Public spaces include open-air lounges with comfortable chaises, spa, and small fitness center. The small size and ultra-shallow draft of this elegant riverboat allow for visits to villages and tributaries not accessible to larger vessels, and the one-to-one guest-to-staff ratio ensures an unparalleled river cruise experience.

Program Rates (per person)

CATEGORY	DOUBLE	SINGLE
JUNIOR SUITE ~216 sq. ft., with French balcony	\$7,995	\$13,495
SAIGON SUITE ~235 sq. ft., with French balcony	\$8,995	\$15,495
APSARA SUITE ~235 sq. ft., with French balcony	\$9,995	—
TONLE SUITE ~305 sq. ft., with French balcony	\$11,495	—
ANGKOR SUITE ~495 sq. ft., with French balcony, private veranda, complimentary laundry service, and evening canapés	\$12,995	—



General Information

PROGRAM RATES INCLUDE

All accommodations, meals, and excursions as specified in the itinerary, including 12 breakfasts, 11 lunches, and 9 dinners • Comprehensive program of briefings, lectures, and presentations • Group transfers for all participants on group arrival and departure dates • **All gratuities to porters, wait staff, guides, drivers, and ship personnel for all group activities** • Port charges and entrance fees • One complimentary spa treatment per person during the cruise • **Local beer, coffee, tea, and soft drinks with all group lunches and dinners on land, including wine with dinners • All local liquor, beer, and soft drinks on board Mekong Princess** (wine and imported liquors available for an additional cost) • Bottled water on motorcoaches • Comprehensive packet of pre-departure information • Professional tour manager throughout the program

AIR ARRANGEMENTS

U.S. domestic and international airfare is not included in the program rates. Valerie Wilson Travel, Inc., can help with airline arrangements for this trip and can be reached at 877-376-1754. You are also welcome to book your air transportation through your local travel agent, an online travel site, or the airline of your choice. Further information about making flight arrangements will be sent to confirmed participants.

WHAT TO EXPECT

This is a moderately active program. Participants should be able to walk unassisted for extended periods (typically three hours) over uneven surfaces, and up and down narrow stairs. In October, the average temperature in Cambodia and Vietnam is in the low to high 80s F, and the average humidity is 80%, with intermittent rain. Although the riverboat, hotels, and motorcoaches are air-conditioned, temples and traditional conveyances such as cyclos and sampans are not, nor are some restaurants and museums. Travelers should be able, with assistance, to climb in and out of small boats and other local vehicles such as bicycle-driven and motorized rickshaws. SARS-COV-2 (COVID 19) vaccinations are required for all participants as well as tour staff and shipboard crew. Up-to-date COVID-related protocols and procedures will be communicated in pre-trip documents.

GROUP SIZE

This program can accommodate 24 participants, including travelers from the Archaeological Institute of America and the World Affairs Council of Philadelphia.



HO CHI MINH CITY

VIETNAM & CAMBODIA

CRUISING THE MEKONG RIVER

ABOARD THE 14-SUITE MEKONG PRINCESS

October 2-15, 2023

GENERAL INFORMATION (CONTINUED)

PROGRAM RATES

DO NOT INCLUDE

- U.S. domestic and international airfare
- Passport/visa expenses
- Medical expenses, immunizations, or COVID-19 testing if required at the time of travel
- Travel and trip cancellation insurance
- Private transfers or airport transfers outside of group arrival and departure days
- Excursions that deviate from the scheduled tour options
- Airline baggage charges
- Meals not specified in the itinerary; dishes and beverages not part of the included meals; liquor or soft drinks except as noted
- Laundry or dry cleaning
- Telephone, fax, internet, and email charges
- Room service
- Other items of a personal nature

A NOTE ABOUT RATES

Tour rates are based upon current fuel prices, currency values, taxes, tariffs, and a minimum number of participants. While we will do everything possible to maintain the listed prices, they are subject to change. If there are significant changes, details and costs will be advised prior to departure.

INSURANCE

Travel insurance for trip cancellation and interruption, medical problems, baggage loss and delay, etc., is highly recommended. Cancellation policies that apply to this expedition are included in this brochure. Information about travel insurance will be sent to confirmed participants.

To reserve a place, please contact the World Affairs Council by phone at (800) 942-5004 or (215) 561-4700 x209 or x231. You may fax the completed reservation form to (215) 561-5660 or mail to One Penn Center, 1617 JFK Blvd. Suite 1055, Philadelphia, PA 19103.

For more information please visit our website at www.wacphila.org or email travel@wacphila.org.

NAME #1 (as it appears on passport) BIRTHDATE

NAME #2 (as it appears on passport) BIRTHDATE

MAILING ADDRESS

CITY / STATE / ZIP or POSTAL CODE

HOME PHONE MOBILE PHONE

E-MAIL 1

E-MAIL 2

TERMS & CONDITIONS

Complete Terms and Conditions including Statement of Responsibility will be made available to you at time of registration, or in advance upon request. A signed "Terms & Conditions, Release from Liability, Assumption of Risk and Binding Arbitration Clause" is required from each applicant prior to participation on the tour.

All payments are 100% nonrefundable, regardless of booking date. For this reason, we strongly urge participants to purchase trip cancellation insurance. No refunds will be made for any part of this program on which you choose not to participate. NOTE: Neither the World Affairs Council of Philadelphia nor Criterion Travel, the tour operator, accepts liability for any airline cancellation penalty incurred by the purchase of a nonrefundable ticket in conjunction with this tour.

HEALTH

All participants should be in good health and capable of keeping up with an active group of travelers. By forwarding the deposit for passage, the passenger certifies that he/she does not have any physical or other condition or disability that would create a hazard for him/herself or other passengers.

RESERVATIONS & PAYMENTS

To reserve space, call (800) 942-5004, email travel@wacphila.org, or return the completed reservation form with your \$1,000 per person deposit to: World Affairs Council of Philadelphia, One Penn Center, 1617 JFK Blvd. Suite 1055, Philadelphia, PA 19103. Final payment is due June 5, 2023 (120 days prior to departure). For those who register after June 5, 2023, full payment is due upon registration. Final payment must be made by check or bank transfer.

CANCELLATIONS & REFUNDS

Upon payment of the \$1,000 per person deposit, all reservations are subject to the cancellation provisions set forth below and by which the passenger agrees to be bound. Cancellations shall not be effective until they are received in writing and confirmed by the World Affairs Council of Philadelphia. Deposits are refundable (less a \$250 per person admin fee) if written notice of cancellation is received within 30 days of booking; after that, deposits are 100% nonrefundable. After the June 5, 2023 final payment deadline:

ITINERARY CHANGES

The itinerary presented for this tour is subject to modification and change by Criterion Travel. Every reasonable effort will be made to operate the program as planned; however, should unforeseen world events and conditions require the itinerary to be altered, Criterion Travel reserves the right to do so for the safety and best interest of the group. Any extra expenses incurred in this situation are the responsibility of the participant.

California Seller of Travel Program
CST #2088800-40

DEPOSIT

I'd like to pay my deposit by credit card.

Once a request is received, a Travel Counselor from Criterion Travel will contact you within two business days to securely take your credit card information for the deposit. Your reservation is not confirmed until your deposit is paid and processed. Deposit may be made by American Express, Discover, MasterCard, or VISA, or by personal check. If paying by check, please make check payable to Criterion Travel and include with the form.

--or--

Enclosed is my check for \$_____ (\$1,000 per person, payable to Criterion Travel) to reserve _____ place(s) on

Vietnam & Cambodia

SINGLE TRAVELERS

I prefer to have single accommodations (*limited availability*) or I plan to share accommodations with:

ACCOMMODATIONS

Cabin category preference:

1st Choice _____ 2nd Choice _____

Bed Preference (not guaranteed): One bed Two beds

I/We have read the Terms & Conditions section of this brochure and understand and agree with them as stated herein:

SIGNATURE DATE

SIGNATURE DATE